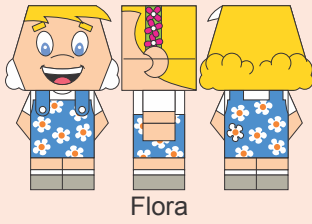


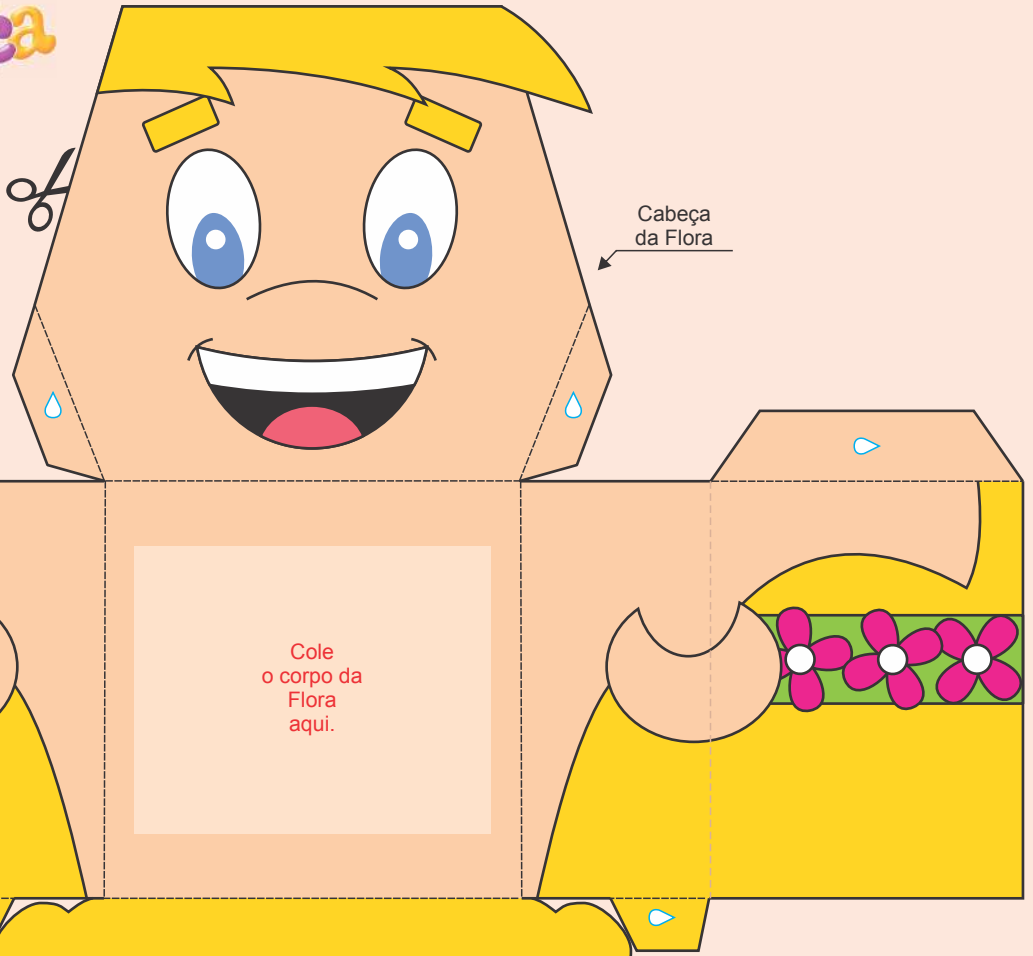


Monte os bonequinhos de papel de cada um dos personagens da Turminha!

É muito fácil, siga as seguintes instruções: recorte cada peça, dobre as linhas pontilhadas, cole as abas com a marca e comece a brincadeira. Eles também vão ficar bem legais enfeitando seu quarto!



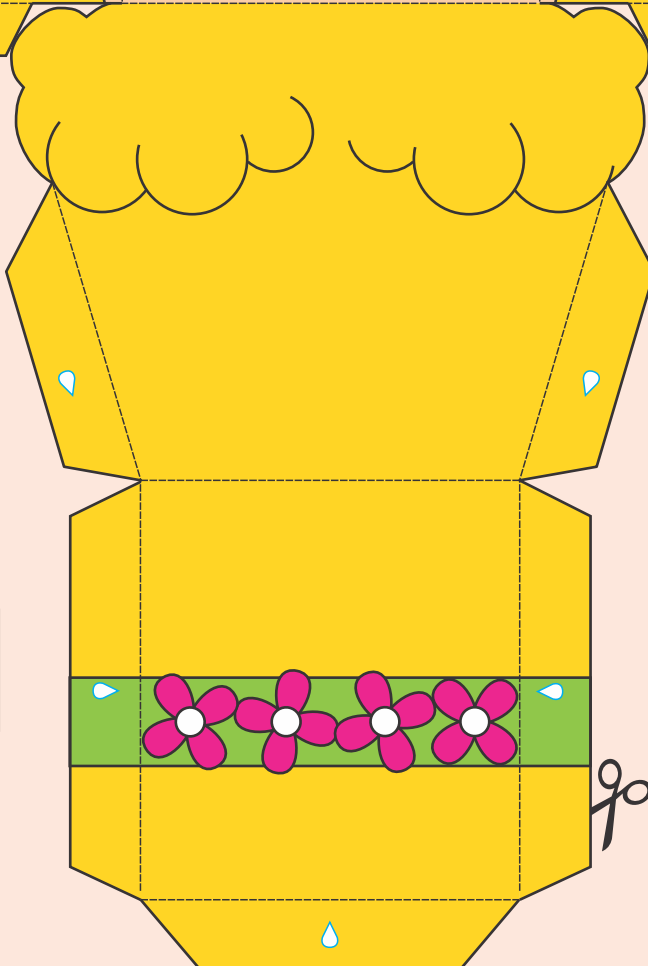
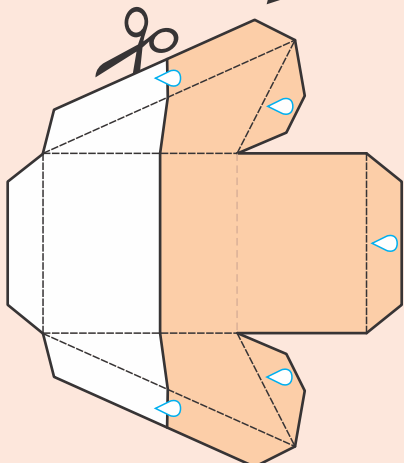
Flora



Cabeça da Flora

Cole o corpo da Flora aqui.

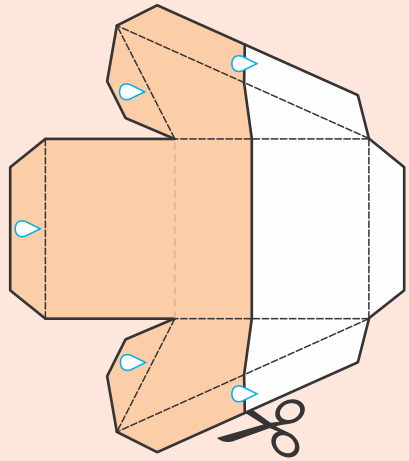
Braço direito da Flora



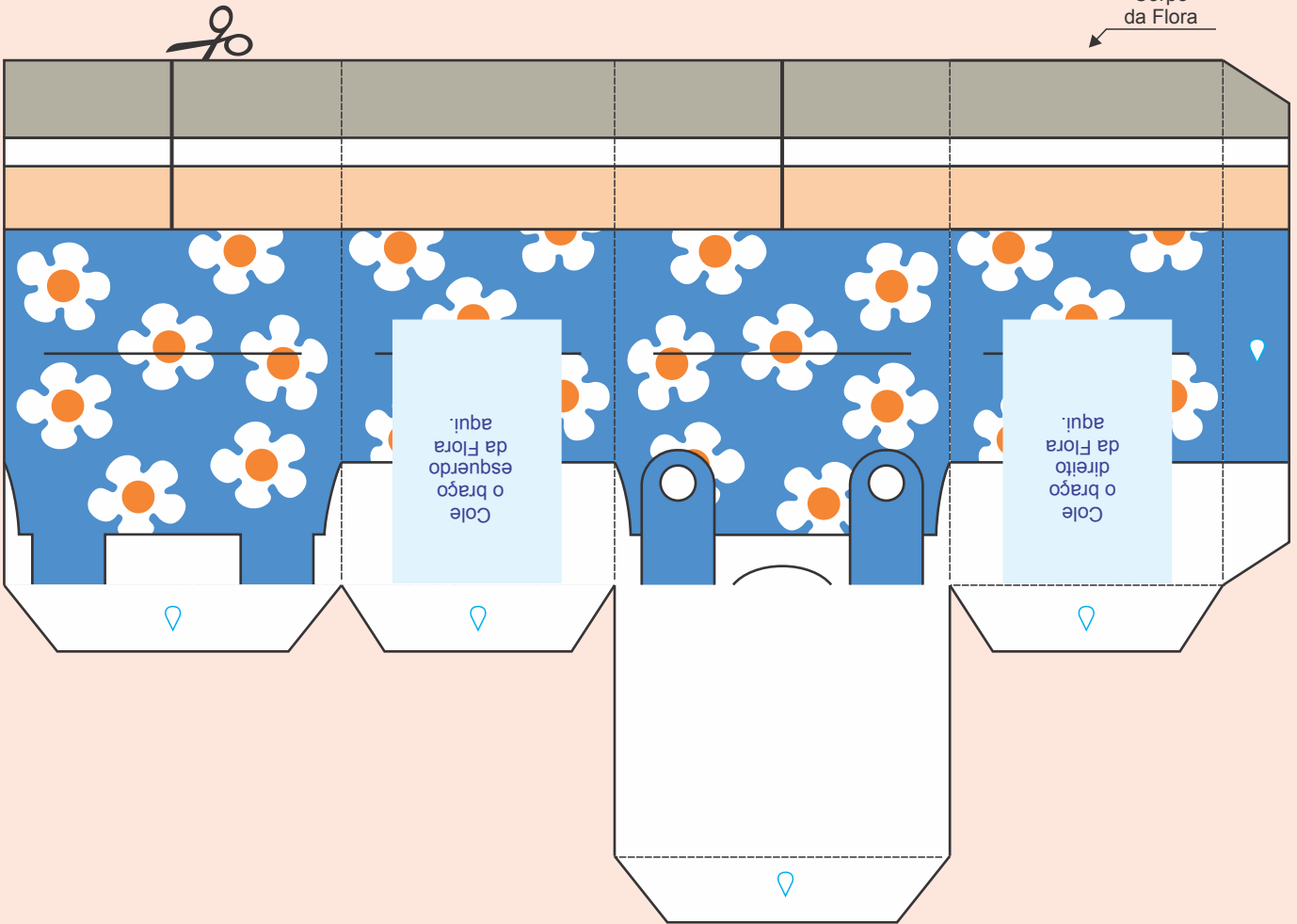
Ações:

-  Recorte
-  Cole
-  Dobre

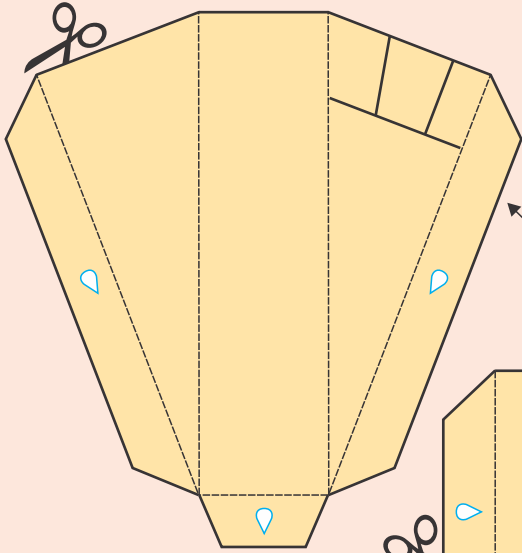
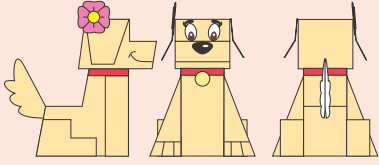
Braço esquerdo da Flora



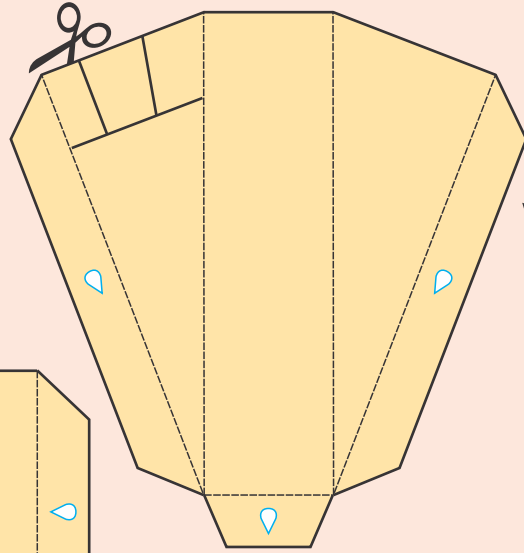
Corpo da Flora



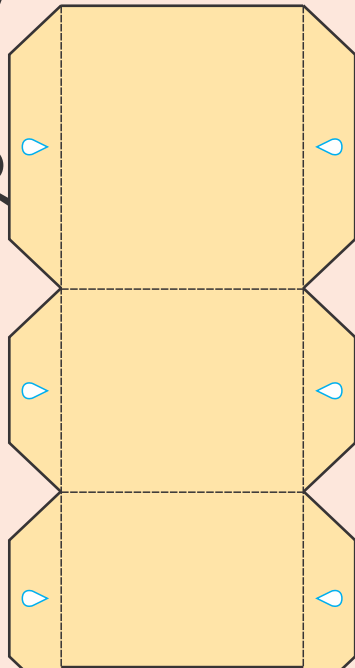
Belinha



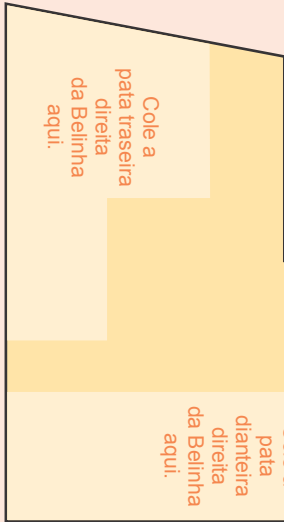
Pata dianteira esquerda da Belinha



Pata dianteira direita da Belinha

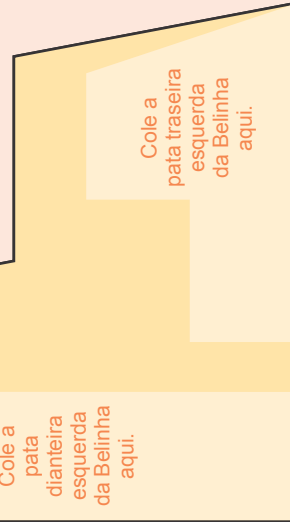


Corpo da Belinha



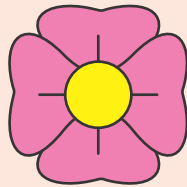
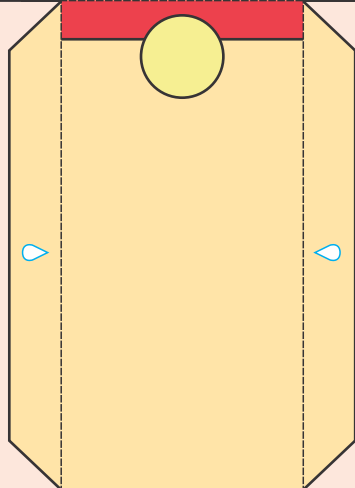
Cole a pata traseira direita da Belinha aqui.

Cole a pata dianteira direita da Belinha aqui.

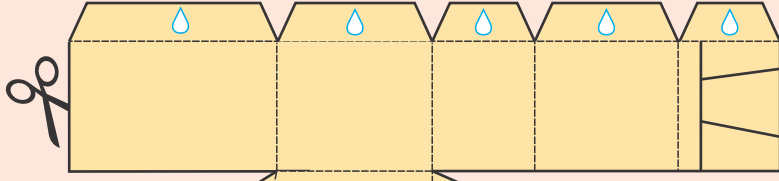


Cole a pata traseira esquerda da Belinha aqui.

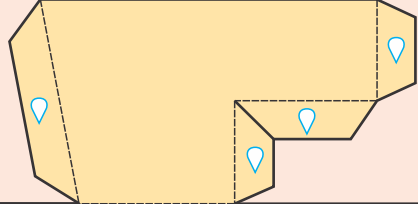
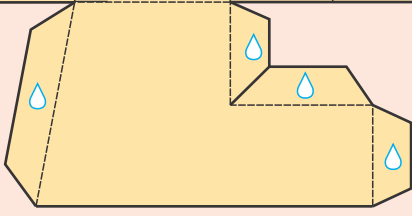
Cole a pata dianteira esquerda da Belinha aqui.



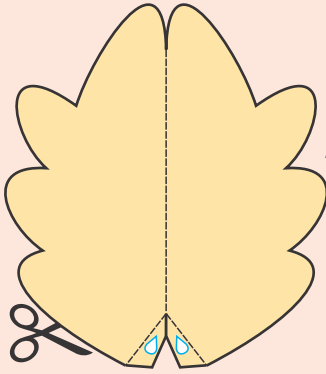
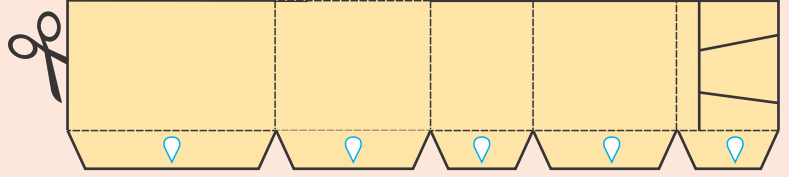
Flor da cabeça da Belinha



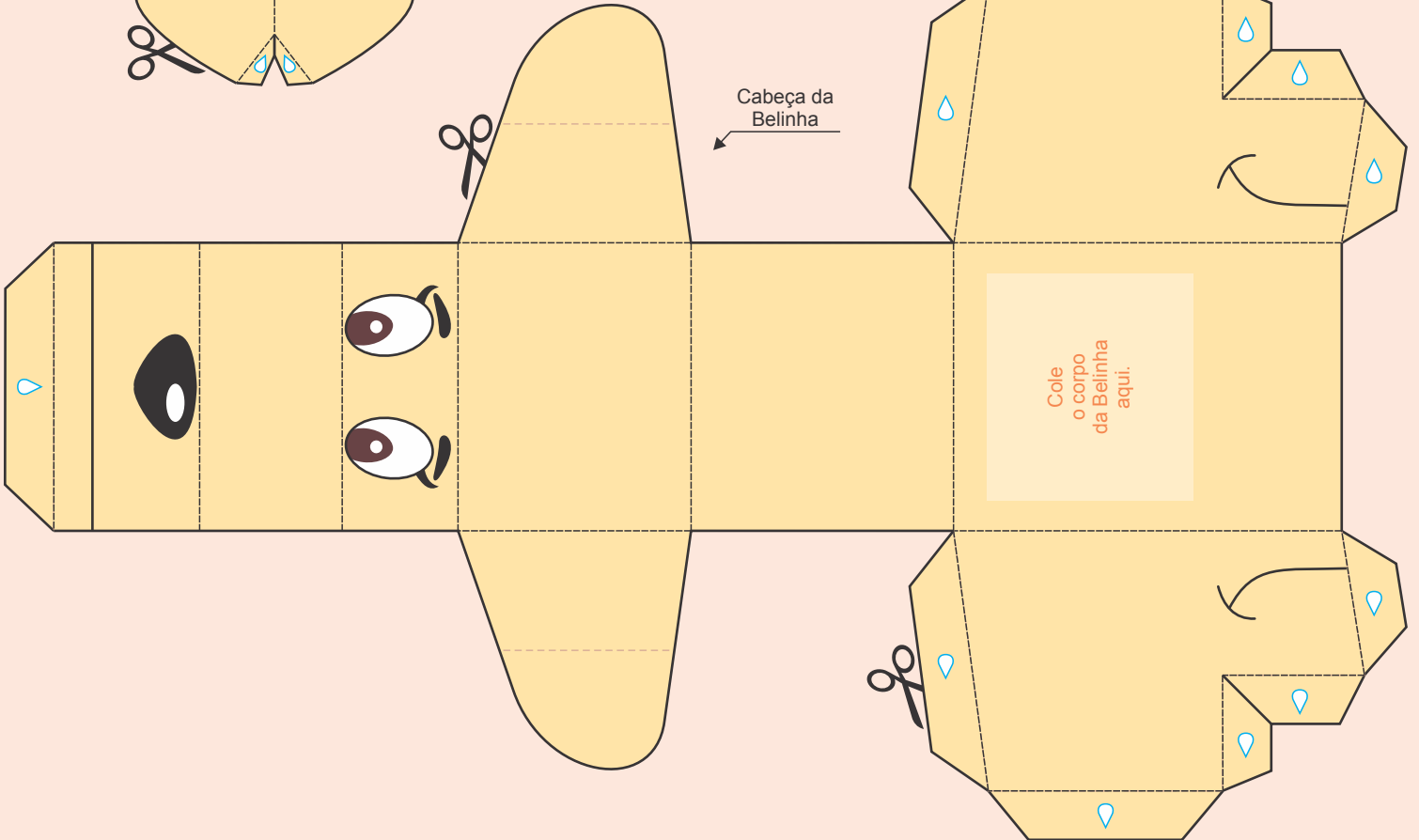
Pata traseira direita da Belinha



Pata traseira esquerda da Belinha



Calda da Belinha



Cabeça da Belinha

Cole o corpo da Belinha aqui.